

Warnings

Retrofitting the Rifa-lite to upgrade it to the Rifa eX is a multi-step process. First you must remove both the IEC connector from the power cord and the lamp socket core from the Rifa. Next you will replace the old core with the new Rifa eX core and lamphead. Finally you will wire the new replacement IEC connector. Some steps require a small flat head screwdriver, in addition to the supplied Allen Wrench.

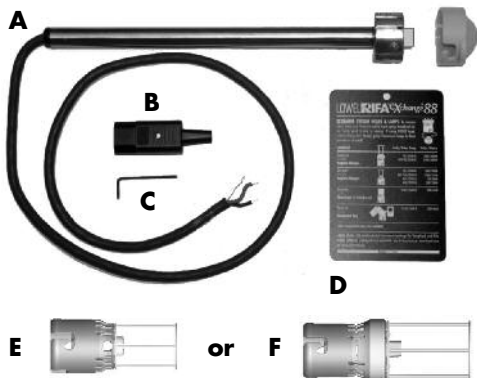
■ **Warning - Risk of Fire / Electric Shock** if improperly wired.

■ **This retrofit kit should only be installed** by a qualified electrician. If you have any questions about the process described below, contact Lowel.

■ **Reminder: Lowel does factory upgrades of Rifa.**

■ **Read enclosed Updated Warnings Label fully**, and follow these warnings in addition to original warning label (sewn onto Rifa shell). Also read all supplied Rifa eX instructions fully.

Supplied Parts List



Parts & their codes for all Retrofit Kits

A Rifa eX Core with Base Cap
core for Rifa eX 44 (10535)
core for Rifa eX 55, 66, 88 (17224)
base cap for all cores (17232)

B IEC Connector (10004/2)

C 3/32" Allen Wrench (17999)

D Updated Warnings Label
for Rifa eX 44 only (17944)
for Rifa eX 55 only (17955)
for Rifa eX 66 only (17966)
for Rifa eX 88 only (17988)

E Standard eX Lamphead for Rifa eX 44 (TH-X300)

F Standard eX Lamphead for Rifa eX 55, 66, 88 (TH-X1000)

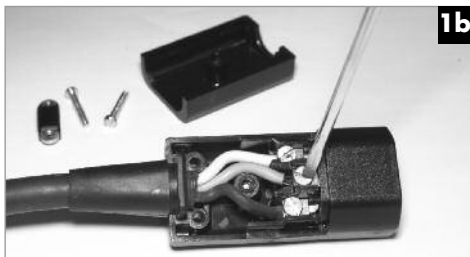
Codes for User & Lowel Repair Retrofits

Model	User Retrofit Kit	Lowel Repair Retrofit
Rifa 44	LC-74	LC-741
Rifa 55	LC-75	LC-751
Rifa 66	LC-76	LC-761
Rifa 88	LC-78	LC-781

Step 1 - Removing the Core



Place original Rifa-lite on a stand, open fully **but do not tighten the rear locking knob**. The light should be oriented so the Warning/Lamp label on the exterior is on the bottom * (its normal position is on top). If necessary, loosen rear locking lever (**), rotate light, and relock. Do not attach front diffuser.



Using a flat head screwdriver, disassemble the power cord's IEC Connector, and remove the wires from their terminals. Slide rubber strain relief sleeve from power cord. Discard old IEC Connector.



Locate the Allen Set Screw, at the top of the rib collar behind the large lamphead core. If you don't find it there, feel around the ring until you locate it. Using supplied Allen Wrench, loosen Set Screw **but do not remove**.



Pull center Rifa lamp core assembly straight out and discard.

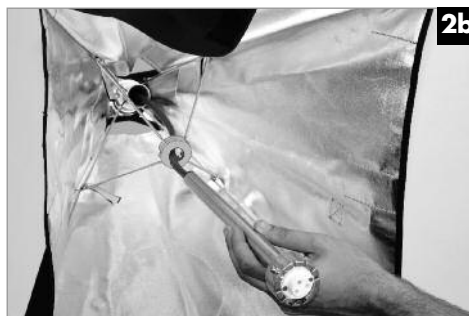


Loosen spring tension of Rib Arms by pulling Rib Collar gently forward so it separates from frame tube and hangs loose.

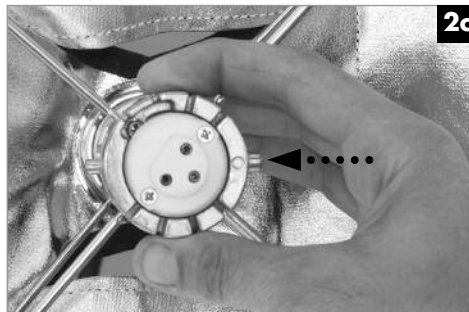
Step 2 - Installing the New Core



Remove the yellow safety cap from new eXchange core.



Take the new eXchange core and thread its power cable through the Rib Collar and Frame Tube, so that it appears out the back of the light. Push the core into place, seating the Rib Collar directly behind the base of the new core, so the Rifa shell is fully opened.



Rotate the core so that the larger of the 2 side pins is on the right when viewed from the front (see arrow).



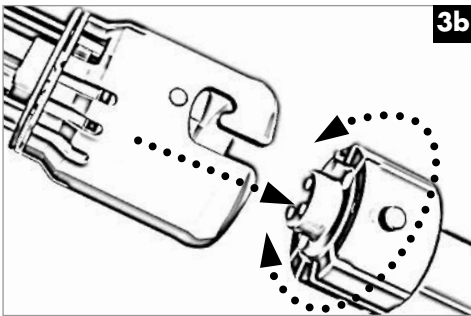
Using the supplied Allen Wrench, re-tighten the Set Screw in the Rib Collar firmly. If more tightening leverage is needed, use the other end of the wrench.

Step 3 - Installing the Lamphead



3a

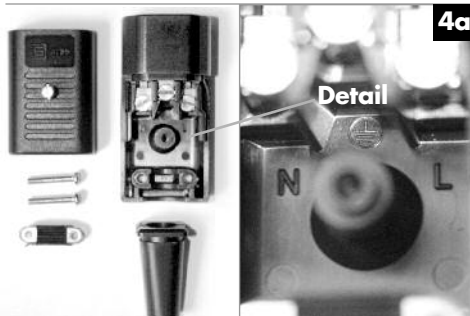
Tighten locking knob on rear of Rifa, and grasp rear stem firmly as you install lamphead.



3b

Line up the J-hook cutouts on the side of the lamphead with the side pins on the core. Note that 1 pin is larger than the other. Push & twist to install the removable lamphead on the core. When complete, remove Rifa from stand to wire the new IEC connector.

Step 4 - Wiring the IEC Connector



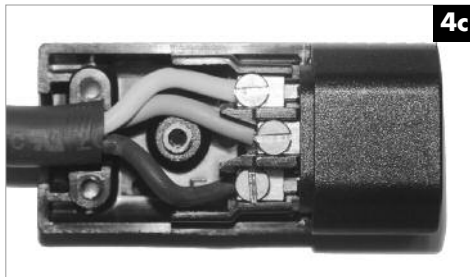
4a

Disassemble the new IEC Connector completely by removing its Cover, Plug Strain relief, & 2 screws holding the Strain Relief Bar. Note that inside the IEC Connector, one screw is labeled **N** and the other is labeled **L**. Center screw is Ground (see Detail).



4b

Take the Power Cable of new core and feed it through the Rubber IEC Strain Relief.

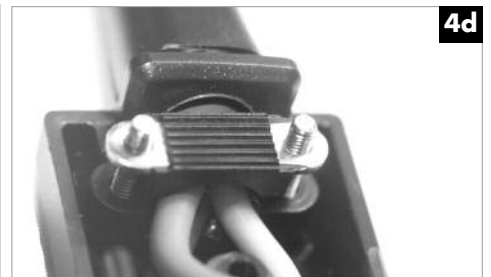


4c

Place the conductors into terminal holes as shown, with White wire to **N**, Black wire to **L**, and Green wire to **Center**. Install & tighten the Green wire last. Tighten all firmly. After tightening, position the Green wire so it clears center screw post.

Warning: Before closing IEC Connector, visually confirm that wires are connected to proper terminals.

White - N terminal
Black - L terminal
Green - Center terminal



4d

Slide the IEC Strain Relief along the cable and return it to its cutout channel in the IEC Connector. Replace the Strain Relief bar and tighten firmly.



4e

Reinstall the Plug Cover, and tighten IEC housing screw.

Attaching Warning Label



Untie the Rifa Carry Bag closure cord, and thread the Updated Warnings label into it. Securely retie the knot.

Lowel-Light Manufacturing, Inc.



90 Oser Avenue, Hauppauge, N.Y. 11788
 Call: 800 645-2522 or 631 273-2500

e-mail: info@lowel.com
www.lowel.com



Problems, info, repairs, etc.

Lowel equipment and kits are sold through authorized Lowel Dealers and, in some countries, Authorized Lowel Distributors. Repairs, problems, suggestions, and requests for brochures, instructions, parts lists may be handled by your authorized Lowel Dealer (Distributor) or directly with Lowel. Electrical repairs should be made only by Lowel or a qualified electrician. Rifa-lite* is a registered trademark of Lowel-Light Manufacturing, Inc. U.S. Patent No. 4594645, © 2009 Lowel-Light Mfg., Inc. ver: 1.1 117